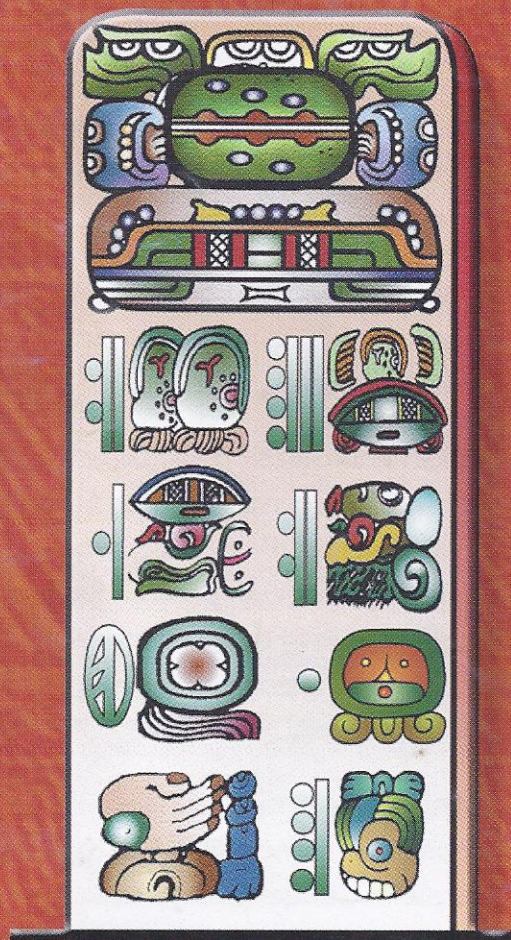


# Kaqchi' Wuj



Rukab'laj Rukolik ri b'anob'äl



Chi  
 Kab'lajuj B'aqtun,  
 B'elejlajuj K'atun,  
 Waqi' Tun,  
 Kab'lajuj Winäq,  
 Wa'ix Q'ij  
 Jun aju'  
 Xel  
 Rukab'laj Kaqchi' Wuj.



RULEWAL RI KAQCHIKEL  
 TINAMIT

KAQCHIKEL



# Kaqchi' Wuj

**Ri Kaqchikel Cholchi'**  
 jun ruq'a' ri  
**Maya' Cholchi' aj Iximulew**  
 (Academia de Lenguas  
 Mayas de Guatemala)

## K'AMÖL TAQ B'EY PA KAQCHIKEL CHOLCHI':

**Kaji' Kawoq**, Alberto Exquit Choy  
**Kaqtijax**, Anastasio Guarcax  
 Rosalino Tichoc Cúmes  
 Delfina Soyoy Jutzuy  
**Kab'lajuj Tijax** Martín Chacach Gutzal  
**Raxche'** Demetrio Rodríguez  
 Abel Sincal

## XETO'O

Rusamajela' ri Kaqchikel Cholchi' chuqa' ri  
 Kaqchikel Moloj

## XNUK' PA

Cholsamaj, Tel: 2325402 - 2325959

## Xtz'aj pa:

Nawal Wuj, Tel/Fax: 2328568

## RUCHOLAJEM RUPAM RI WUJ

Na'ojil taq tzij .....	:
Kitzij winaqi' .....	:/ :
Tijonik .....	/
B'anob'äl .....	:/ :
Ruwach'ulew .....	:/
Pach'un Tzij .....	·
K'ak'a' taq Tzij .....	·

# NA'OJIL TAQ TZIJ

¿Achike k'a xqab'än?, xa jun qach'ab'äl töq öj k'oj  
 chi la pa Tulan, man ützt ta ke re' xqab'än "Popol  
 Wuj". Ke re' xkib'ij ri qati't qamama' ojer.

Xa jun qate' qatata' röj kaqchikela' winäq, xa jun  
 qach'ab'äl, xa jun qajuyu' taq'aj, xa jun qanawal,  
 Sotz'il rub'i', ruma chi xa xek'iyär ri qati't qamama'  
 k'oj chi xexule' xejote chi ruwäch ri juyu' taq'aj chi  
 rukanoxik kiway kuk'ya' chi rukanoxik kulew richin  
 yetiko'n, chuqa' chi rukanoxik kitzyaqb'al.

Ke re' ri kik'aslem ri nab'ey qate' qatata', ruma ri'  
 röj öj ki'y kimam xojkiratäj chi ruwäch ri loq'oläj juyu'  
 taq'aj wakami rub'ini'am KAQULEW.

Man jun achike ruma yojb'ison yojmalin chi  
 qanimal qach'aq' qi', näj chi naqaj qakojol, k'iy ch'ik  
 juna' ke re' qak'ulwachin pe, kan ke la' wi ri k'aslem.

Öj kirinäq kan chi ruwäch ri Kaqulew chuqa' chi  
 ruwäch ri Iximulew, po ma qach'aron ta qi'. Ri  
 qach'ab'äl rujalon jataq ri', ri qatzyaqb'al chuqa'  
 rujalon jatäq, jalajöj rub'anikil, po man jun k'ayewal  
 ta, nqak'axaj qi' nqetamaj qawäch, qach'alal qi', öj  
 maya'i winäq, ajb'oko', ajtzoloy ja', ajpanq'än, chuqa'  
 ch'aqa ch'ik öj Kaqchikela'.

Ri Kaqchikel Cholchi' ruq'a' ri K'ulb'il Yol Twitz  
 Paxil, nsamäj pa ruwi' ri qach'ab'äl, chi rujunumaxik  
 rutzijoxik, rutz'etik chuqa' rutz'ib'axik, ke ri' k'a  
 xtijotayin xtisijan ri chuwaq kab'ij, ke ri' chuqa'  
 xkojtkir nqaya' ruchuq'a' ri qab'anob'al, ri loq'oläj  
 q'aq' xya' pe chi qe ke la' pa Tulan. Mani nqachüp ri  
 qaq'aq', ri kiya'on kan ri qati't qamama' Säq kiwi',  
 Säq kijolom yetzu'n yemejan pe pa nawal, pa kaq'iq',  
 e ulew e sanayi' ch'ik.





## K'AK'A' TIJONİK

*Kaqhijax, Anastasio Guarcaax Guarcaax*

Pa Iximulew kaji' tinamit e k'oj: Xinka, Garífuna, Kaxlan, Maya', chi kaji' molaj re' jalajöj wi rub'eyal ri qak'aslem jalajöj ri qach'ab'äl, jalajöj nqanojjij ri kaj ulew; man ruma ta jalajöj ri qak'aslem man ta ma junam qawäch, k'oj ta chi qonojel ri winaqi' junan ta qaq'ij.

Pa ruwi' ri tijonik qak'ulun pe pa taq tijob'äl chuqa' ri yojtjin nqak'ül, k'oj ta chi nuya' ruchuq'a' ri tijonik, ri jalajöj na'oj nkiya' ri qati't qamama', qate' qatata' pa qochoch, man pa rub'eyal ta k'a b'anom chi qe kuma ri kaxlani' ki ya'on pa qajolom chi ri qab'anob'al röj man ütztä, ri kichin ri je' ja kan ütztä ruma ri' k'oj chi nqak'ül.

Xa nikijäl ri qana'oj ruma la wakami' q'ij säq janila' k'ayewal qilon man kan ta qitzij chi ri qak'aslem b'anob'äl yojruk'waj pa jun ütztä k'aslemal, pa taq juyu' pa taq tinamit ri qawinaq

man kan ta nkiya' chik ruq'ij jun winäq, ri ruwach'ulew, k'oj elëq' pa taq q'atob'äl taq tzij xa pwäq nsamäj, re k'a yojnimon chi ruloq'ik kik'ayij ri nimaq taq b'eyoma; pa taq talutzij, taluwuj chuqa' pa taq taluwäch xa itzël taq na'oj nkiya' pe, xa kitaqën jantape yojk'oje' chuxe' kiq'a' kaqän.

Röj te'ej tata'aj, tijonela' chuqa' tijoxela' k'oj chi nqak'utuj jun k'ak'a' tijonik, k'oj chi yoj samäj pa ruwi' jun k'ak'a' na'oj, tiqaya' pe ri kina'oj, ketamab'alil ri qati't qamama' tiqanuk'u' pa junam, chi ruxe'el ri kitijonik ri qalk'wal ja ri qab'anob'äl, k'a ri tuxima' ri' ruk'in ri kaxlan b'anob'äl, ruma chi k'atzinel nqak'waj pa qak'aslem chi ka'i' b'anob'äl. Kojkikot maya' winaqi' ruma chi k'oj jun nimaläj b'anob'äl ri kiya'on kan ri qati't qamama' pa qaq'a' pa qaqän, mani nqatzäq kan chi kiwäch ri qami'al qak'ajol.





# RUK'A'TZ RI CH'AB'ÄL

Lw', Pedro Morejon.

Töq xetz'ukutuj pe re winaqi' chi ruwäch ri ruwach'ulew, xetz'ukutäj pe chuqa' ri ch'ab'äl, ruma xa xe ruk'in ri ch'ab'äl tikirel niqaq'axaj jun na'oj, niqak'utuj jun utzil, niqaya' rub'ixik xab'a achike, niqana'ojij qa, wi man jun ta qach'ab'äl, ruk'in jub'a' man xkojkäm ta ruma manäq qach'ab'äl, xa xe janila k'ayew nub'än ri qak'aslem, kiy chi re ri qarayb'al man xtik'achoj ta, ri qana'oj man xtiqak'axaj ta.

Konojel ri ch'ab'äl ye'okusäx kuma ri jujun tzob'aj winaqi' pa ronojel ri loq'oläj ruwach'ulew k'oj kiq'ij chi konojel ruma xa junam yek'atzin wi.

Röj niqakusaj ri kaqchikel ch'ab'äl, ja re' ri kitz'ukun kan, kisipan kan ri qati't qamama' chi qe, re' jun nimaläj sipanik ruma man xab'a achike ta xtinuk'un jun ch'ab'äl tz'aqät achi'el ri niqach'ab'ej.

Ri kaxlani' töq xetuqa pa kaqulew, xkiqasaj ruq'ij ri qach'ab'äl, chi uchuq'a' xkajo' ta xkichup ruwäch ri qach'ab'äl chuqa' ronojel ri qana'oj.

Noqa chi nuk'u'x ri nkitzijoq chi qe ri nute nutata' chi ri ojer kan rije' xya' jub'a' kulew pa qajik richin nkitik ruwäch, pa rutojik ri ulew re', k'oj chi yeb'esamäj pa taq'aj, chi ri' ri qawinaq xa ruma man nq'ax ta ri kaxlan ch'ab'äl chi kiwäch janila itzel xb'an chi ke, janila kiq'olik xb'an chi ke, k'oj re' xech'ay kuma ri e k'amöl b'ey ri taq'aj chuqa' kuma ri chajinel, rije' k'a re' e kaxlani'. Ri nute' nutata' janila xepoqonär, ruma ri' rije' xa xe pa kaxlan ch'ab'äl xojkitijoj wi, rije'

man nkajo' ta chi röj niqak'ulwachij achi'el xkik'owisaj pe rije'.

Jun te'ej tata'aj jantape' nurayb'ej ri ützi chi ke ri ralk'wal, ninb'ij re' ruma rin in tata'aj chik, xa xe k'oj chi nqatz'ët chuqa' chi ronojel ri nik'ulwachitäj xa nijalatäj, wakami man junam ta ruk'in ri ruq'ijul töq ri qate' qatata' xe'etzeläx ruma yech'on pa maya' ch'ab'äl. Ri ruq'ijul öj k'oj wakami rujalon chik ri', wakami pa ronojel ri ruwach'ulew ketaman chi röj maya'i' k'a' öj k'äs na, k'oj rejqalem nkiya' ri qana'oj, ri qab'anob'al; chuqa' chupam ri : l mokaj chi re ri Cholk'aslemal nub'ij chi ri maya' taq ch'ab'äl k'oj nım kiq'ij; chuqa' ri Champomal chupam

ri Nuk'ulem chi rij kib'anikil chuqa' Kich'ojib'äl ri Ach'amaqi' xupab'a' ri richin yerub'än samaj pa ruya'ik kiq'ij ri maya' ch'ab'äl, ruma xq'alajin chi kiwäch chi ri qach'ab'äl k'oj nım kiq'ij.

W a k a m i ya'on q'ij chi qe, pa qaq'a' röj Kaqchikela' k'oj wi wakami niqanimirisaj ruk'ojlem ri qach'ab'äl, wi k'a niqach'ab'ej tiqatijoj qi' chi re rutzib'axik, wi man

niqach'ab'ej ta chik tiqakanoj achike nik'utun chi qawäch. K'oj na wi jun q'ij ri qach'ab'äl xtib'erujunamaj ri' ruk'in ri' kaxlan ch'ab'äl, ruma ri' k'oj ta chi ja röj niqaya' ri quchuq'a'; wi manäq ruk'in jub'a' xa ja chik ri kaxlani' xkenab'eyij chi qawäch, xa ja yan chik rije' xkeb'ek'utun rutz'ib'axik ri Kaqchikel ch'ab'äl chi kiwäch ri qalk'wal.





# K'AK'A' TIKO'N

Aq'ab'al, Audelimo Saqb'in

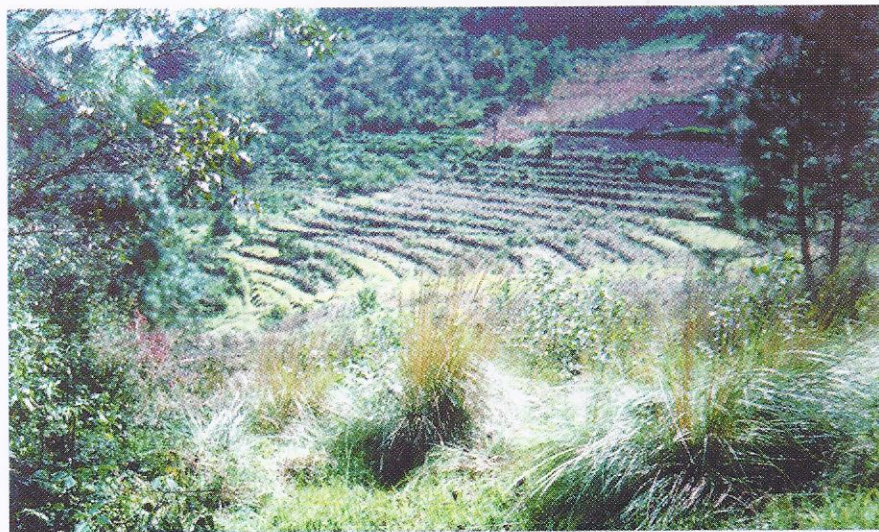
## K'atzinel nqetamaj chi ri qate' ruwach'ulew janila k'iy rub'eyomäl.

K'oj chi nqaya' rejqalem ronojel re', tiqetamaj k'a achike ruwach taq che' ri yealäx kiyon, chuqa' k'atzinel nqetamaj achike tik'on k'oj chi yetik.

Ri Ajaw retaman nub'an chi qe, retaman chi röj öj ralk'wal, xa ja k'a röj winaqi' qamestan chik ri rusamaj rubanon rija', re k'a re'man qamak ta röj, xa b'anom chi qe, rix iwetaman chik achike ri e b'anayon chi qe chi keqamestaj ronojel ruq'ij ri jalajöj taq samaj.

Ri tikoj ri e k'oj chi yerub'an ri achin, richin nik'ase' ja re', ri ixim, ri kinäq', ri jaws, ri pilöj, ri k'um, ri ik'oy, ronojel re', ja ri achin k'oj chi yerutik, k'oj chi yeruchajij, richin man yekäm ta. Konojel ri tiko'n re' janila' k'iy rejqalem chi kiwäch ri qawinaq, xa ja k'a wakami re' yetajin yemestäx, ruma ye'uqa' pa qatinamit juley chik tikoj.

Re tikoj re' juk'an chik tinamit e petenäq wi', kik'amon k'a pe chi qe, chi nqatik wawe', xa k'a röj k'oj chi nqatz'et achike ruwach ri ulew nuk'am ri jalajöj taq tiko'n re', ruma man xab'a achike ta ri tikoj nuk'am.



Re jalajöj taq tiko'n re' yek'am el juk'an chik tinamit, ja ri winaqi' ri q'an kiwi' ja ri' ri yeloq'on. Koj jun k'utunik ninb'an chi iwe Achike ruma ri winaqi' ri q'an kiwi' man nkitik ta ri jalajöj taq tiko'n re'? k'oj re' iwetaman, k'oj k'a re' manäq, ruma ri' chupam re jun wuj re' ninb'ij chi iwe achike ruma rije' man nkitik ta ri tiko'n re' pa kulew, rije' ketaman wi nkitik re tiko'n re' ri kulew nk'is ruchuq'a', ri kulew rije' man kan ta ütz richin re tikoj re', xa ruma ri' rije' kitaqon pe chi qe röj chi nqatik pa ri qulew, ri jalajöj taq tiko'n re', rije' nkajo' chi chwa'q kab'ij apo xtik'ista ruchuq'a' ri qulew wi man ütz rutz'etik nb'an chi re.

Nkib'ij k'a ri qate' qatata', chi ri ojer man nkikusaj ta ri kaxlan ruchuq'a' ulew (Abono Químico), rije' cha' xekikusala' ruxe' taq che', kakis taq chikopi, ri mesoj ri onel pa taq kochoch, rije' k'a ketaman chi re' man nutz'ila' ta ri qate' ruwach'ulew, rije' kichajin ri qate' ruwach'ulew man achi'el ta ri Kaxlan ruchuq'a ulew nutz'ila' ri qate' ruwach'ulew, wi nutz'ila' ri qate' ruwach'ulew chuqa' yojrutz'ila' röj, ruma ri' kojnojin chi ri tikoj ri e kik'amon ri qach'alal ri juk'an chik Amaq' k'oj chi nqapaj rij man xa xe' ta nqatik ruma ri pwäq ri nkisuj chi qe, k'oj chi nqatz'et

akuchi kan qitzij nuk'am ri tiko'n, ja re' k'a ri jun ka'i' oxi' tzij ri ninb'ij chi iwe chi rij ri ri tiko'n ri yeb'an pa qulew, ruma re' ja re' ri yojruto' ruk'in ri pwäq chuqa' ruchajixik ri qate' ruwach'ulew, chuqa' ninb'ij chi iwe chi k'oj chi nqak'utuj chi ke ri qate' qatata' achike tikoj kan qichin röj? chuqa' achike ri tikoj, ri xa k'a xeulqa' pa qatinamit, wi k'a nqetamaj re', re yojapon näj ruk'in ri qana'oj, wi niwajo' yojito' ruk'in ri jalajöj taq na'oj tikirel yojсамäj junam chi rij rukolik ri qate' ruwach'ulew.

*Handwritten signature and initials.*



# ACHINAN T'AS

Juan Díaz Gómez

Nintz'ib'aj jun ka'i' na'oj chi rij ri rutz'ib'axik ri qach'ab'äl, ruma e k'oj qach'alal ri k'ayew nub'än chi ke chi nkitzib'aj. K'oj jun na'oj ri nub'ij chi nqanimirisaj ri rutz'ib'axik ri qach'ab'äl, qitzij chi jeb'ël ta chi qonojel röj kaqchikela' nqaya' ruchuq'a' ri qana'oj, ruma wakami k'oj xa xe' jun choltz'ib' pa qaq'a', chuqa' jeb'el ta chi qonojel ri yojch'o pa kaqchikel ch'ab'äl, yojtikir ta nqatzib'aj chuqa' nqasik'ij ta.



Chuqa' qak'ulu' ri ch'aqa chik tziy ri kichin ri ch'aqa chik tinamit, ruma ri kaxlani' (q'eqa') ojer kan xkijäch (xkich'är) chi qawäch ruma ri' xujäl jub'a' ri qatzij. Wawe' ntzib'aj ri ruchojmil ri rutz'ib'axik töq nqachäp ri t'as, richin ri t'as ntikir ruk'in ri **ch'akultz'ib'** ri nb'ix ruwäch tziy ja re' ri' rutz'ib'axik chuqa' ri **k'uxatz'ib'**:

Chwäch \ -ch'alkultz'ib'

nu  
a  
ru  
qa  
i  
ki.

Chwäch \ - k'uxatz'ib'

w  
iw  
r  
q  
iw  
k

Tqatz'eta' achike nb'anatäj töq nqaya' ruwäch tziy

Chwäch \ k'-  
Wuj \ te'ej

Nu-wuj nu-te'  
a-wuj a-te'  
ru-wuj ru-te'  
qa-wuj qa-te'  
l-wuj l-te'  
kl-wuj kl-te'

Chwäch \ ch'-  
oj \ alib'ätz

w-øj w-ali'  
aw-øj aw-ali'  
r-øj r-ali'  
q-øj q-ali'  
lw-øj lw-ali'  
k-øj k-ali'

Wi nqatz'ët k'a re'pa kaqchikel ri ruwäch tziy ruk'in ri t'as, man achi'el ta ri kaxlan ri nujäch ri' chuqa' ri t'as töq achinan chik k'oj re' nutzäq ri rij tziy, nuya' rij tz'ij, k'oj re' nuk'ëx ri rupam ri t'as ri kik'wan ka'i' tz'uj chupam.

Pa ruk'isb'äl nintz'ib'aj ri k'exet'as: **Rïn, rat, riJa', röj, rix, riJe'**. Ja re' rutz'ib'axik ri nb'ix rujunumaxik ri Kaqchikel ch'ab'äl, ruma e k'oj qach'alal ri nkib'ij yin, ryin, in re', rin, ruma ri' üt ta wi nqatün rutz'ib'axik, chi ke ri xa xe jun ri xtqab'än, ruma öj kak'al wuqu' tinamit ri yojcho' ri Kaqchikel ch'ab'äl chuqa' ruma manäq k'iy qasik'iwuj: ja re' ri nb'ano chi qe chi man kan ta yojkowin richin nqatz'ib'aj chuqa' nqasik'ij.

Tikirel nawil re na'oj re' pa ri ruwuj ri ma Pakal, ri rub'i' "Rutz'ib'axik ri Kaqchi'.





# ACHIKE RI NIMAB'ÄL K'U'X

*Tz'unun Ya', María del Carmen Tuy.*

Ojer Kan ri qati't qamama' janila jeb'ël ützt xkik'waj ri Kik'aslem. Rije' janila xk'oje' ri ajowab'äl kuk'in, jeb'ël xkiloq'oq'ej ki' chi kikojöl, winaqi', taq chikopi', taq che', taq kotz'i'j, ri qate' ruwach'ulew chuqa' ruk'in ronojel ri k'oj pa ri kajulew. Ja ri' ri **NIMAB'ÄL K'U'X**.

Re jun b'anobäl re' man k'a ta iwir kab'ijir xtz'uk'utäj aq'anij, re b'anob'äl re' kan xsamajix pe ojer q'ij, ojer säq, töq ri qati't Ixmukane' ruk'in ri qamama' Ixpiyakök xkipäj ruk'in ri tz'ite', ri ixim ri achike rub'ankil nb'an kich'akul, kik'u'x ri nab'ey taq qate' qatata'. Chi ri' k'a ri Ixpiyakök ruk'in ri Ixmukane' xkik'utuj chi re ri tz'ite' ri ixim chuqa' chi re ri Ruk'u'x Kaj chi tikib'ij achike ützt yeb'an wi ri nab'ey taq winaqi' wawe' chuwäch ri ruwach'ulew.

Chuqa' xsamajix ri nimab'äl k'u'x töq ri nab'ey taq achi'a', B'alam Kitze', B'alam Aq'ab', Majukutaj chuqa' ri Iq' B'alam xewayjan, xeponin pa taq juyu' pa taq k'ichelaj chuk'utuxik ri loq'oläj q'ij.

Ja ri' ri **NIMAB'ÄL**

## K'U'X.

Töq ri qate' qatata' xkak'axaj ri achike kib'ix, achike kich'abäl ri taq chikopi' chuqa' xkiya' retal achike ri yewachin ri sutz', ri ik', ri q'ij, töq xq'ax chi kiwäch re ch'ab'äl re, k'a ri' xkisamajij. Ja ri' ri **NIMAB'ÄL K'U'X**.

Ri nimab'äl k'u'x jun b'anob'äl ri xkiya' kan ri qati't qamama', rije' janila xkisamajij ruma ri' janila n'im taq etamab'äl xkik'ül, n'im taq samaj xkisöl kan chi qawäch. Re jun b'anob'äl re' ja re' ri ruchapon ri qaxe'el, ri qab'ankil ri quch'uqa' chuqa' ri ach'alal ri'il ruk'in ronojel ri k'oj pa ri kaqulew.

Wakami K'oj chi qonojel chi nima'q chi koköj, k'oj chi nqetamaj achike ruba'nik ri nimab'äl K'u'x, chuqa' achike rusamajixik nqab'än pa taq qak'aslem chi jeb'ël xkojruchajij re loq'oläj Kaqulew, chuqa' wi nqajo' chi jeb'ël xkojkikot pa ri qak'aslem, pa ri qasamaj, pa taq qochoch pa taq qatinamit.

Wi k'oj man kan ta qetaman chi rij ri nimab'äl K'u'x k'oj chi tiqakutuj ri qana'oj chi ke ri qate' qatata', ri xloxir, kiwi' xloxir kijolom chuwäch ri loq'oläj ruwach'ulew.





## XKIL RI JOM RI YOXI'

*Tzi'b'anel Ajpu' Sotz'il, Roberto Xoquic. S.  
Nuk'ulel Aq'ab'al Audelino Saqb'in*

Jun Ajpu' Ixb'alam kej, ri yoxi' ri e pub'anel chuqa' ri etz'anel kik'.

Jantape' ronojel nimaq'a' nkiq'ejela' ri kati't, k'a ri' k'a ri yeb'e pa taq juyu', pa taq k'ichelaj richin yek'astan, richin nkikanoj k'ak'a taq na'oj.

Yalan k'a ye'ajowäx kuma ri chikopi', re' yenojin k'a chi kij-re e qach'alal re e qanimal ri e petenäq chi qatz'etik- yecha' ri chikopi'. ¡Töq k'a ri k'a! ri yoxi' xkitzët jun nimatzikin xub'ij k'a ri Jun Ajpu', -rat a Ixb'alam Kej tatzu' la jun nimatz'ikin- -jo' chi rij- xcha' ri jun Ajpu' chi re' ri rach'alal, jo' k'a chi rij - tiqatzeqelb'ej - xcha' ri Ixb'alam kej - j'o k'a- yecha'. Ri nimatz'ikin re' janila aninäq nxik'an, rije' man nkiq'i ta, xa ja k'a rije' man xkimalij ta kik'u'x chi rij re jun nimatz'ikin re', rije' k'a xeb'e chi rij xkiq'axaj siwan, chojmin raqän ya' chi rutzeqelb'exik man xkimalij ta ki'.

Janila' k'a e kosnäq ri yoxi' ruma janila' anin xekib'anala', xeq'itäj k'a, ja k'a re' xkinojij chi ye'uxlan jumej. Töq yetajin k'a ye'uxlan chi ruxe' jun nimaläj patän che', töq nkitzët k'a nsilon ri patän che', xkitz'ët k'a aq'anij pa ruwi' ri che' jun tukur, jun chi ke rije' xub'ij tapub'aj ruk'in la pub' la tukur la', ri jun chik xub'ij

- mani, re k'a re' xa taqon pe, re xa k'oj nub'ij-ncha'. Töq xuqa' pa kijolom chi ri kati't Ixmukane'

xub'ij jun q'ij chi ke chi ri tukur jun taqonel, Töq xkib'ij - wi nqaya' rejqalem ri rutzij re näj xkojapon.

Töq xkitzët qitzij re jun tukur re' xik'an el chi kiwäch nsutin chi kij, re yoxi' re' xkiya' rejqalem xkitzeqelb'ej el ri tukur, xkik'waj k'a el ri kipub', ri kib'ate' (pisb'äl tz'ikaj), ri kipachq'a' (Pisb'äl q'ab'aj), ri kitz'um (pisb'äl ch'ekaj) xkitzeqelbej el. Ri tukur k'a re' xeruk'waj el pa ruwi' jun juyu', Töq ri yoxi' xe'apon chi ruwi' ri juyu' xkitz'ët jun etz'anib'äl kik', jun jom kan tz'aqät chi yatetz'an, kan xekikot, janila k'a xkimatyoxij chi re ri tukur ruma xuk'üt re jun jom re' chi kiwäch.

Ri jun Ajpu' ri nimalaxel man xuköch ta rutz'etik re jun jom re' aninäq xb'exuke' chi ruwäch ri rukaj tz'uk ri jom chwäch ri kaj tz'uk chi re ri ruwach'ulew, xuk'utuj k'a rusachib'äl rumak chi ruwäch chuqa' xuk'utuj q'ij chi re' ri jom chi yetik'r ye'ok , aninäq k'a xkisula' k'a ri kib'ate', ri kipachq'a', kitz'um, k'a ri k'a , xkichäp k'a ri etzanem, xq'ax k'a jun ka'i' oxi' ramaj xekös k'a el xetzolin el chi kochoch, xa xe' xebe'apon chi kochoch aninäq xkitz'ijoj chi re ri kati't chi xkil jun jom, ri kati't k'a re ret'am chik chi re jun jom re' kan k'oj wi kan chi ja ri kitata' nuk'uyun k'a kan chi kiwäch, ruma k'oj k'a jun q'ij, rije' ye'ok aj jom.







# XAJANIB'ÄL

*Ajpu', Benedicto Cabel*

Katzinel nqetamaj ri kina'oj ri qate qatata' ri qati't qamama', wi röj nqanimaj re jalajoj taq pixa' re' säq nīm qab'ey ri xtub'än ri chwa'q kab'ij apon, chi man yemestäx ri kipixa' ri qati't qamama', nqaya' apon jun ka'i' oxi' pixa' chi iwäch.

Nkib'ij ri qati'it qamama' chi man ütz ta naxupuj ri q'ac' chupam ri tuj taq tajin nik'at ruk'in achi' ruma xa xketzaq el ronojel ri away.

Man tikirel ta yatel taq setäl ri ik' ruk'in a q'ac' ruma ch'anin nsaqir ri awi'.

Man ütz ta yatzuye' pa ruwi' ruch'akat jun rij winäq ruma yarijix chanin stape ma jani' k'iy a juna'.

Töq najik awi, wi k'oj yetzaq man ütz ta naponoj ruma nq'anär ri awi' pa ajolom.

Taq jun ixöq royob'en ak'wal man ütz ta nik'o chij jun kolo' chuqa' k'an, ruma taq napon ruq'ij nuk'owisaj k'iy k'ayewal.

Jun achin taq nb'e chi rutikik ri awän man ütz ta nutij oj ruma ri jäl ye'el tur.

Man tikirel ta naju' awi chupam jun ya'l chuqa' naya' pa ajolom ri pop ruma taq yatel pa b'ey janila xkatkoqotaj ri tz'i'.

Töq at ak'wal man ütz ta nachäp rutza'm ri tz'i' ruma töq yarijix manäq ruk'u'x ri a pwaq.

Man ütz ta yajote' chupam ri k'ujay chaq'a' ruma janila nuxib'ij ri ri loq'oläj jäl.

Wi röj nqakusaj ri pixab'anik re', xtiqaya' kejqalem ri kinojb'al ri qati't qamama', ja re' xkikusaj rije' ruma ri' xe'ok utziläj taq winaqi', xe'ok utziläj taq aqomanela'. Röj chuqa' re' tikirel nqaq'i' ri kitzij ri qati't qamama' wi röj yeqakusaj re pixa' re'.



# RUWACH'ULEW

*Ixchel, María Eugenia Esquit*

Ri ojer kan ri qati't qamama' janila nkiya' ruq'ij ronojel ri k'oj chi ruwäch ri loq'oläj ruwach'ulew achi'el ri tiko'n, ri chikopi', ri che'.

Wakami k'a ma kan ta chik nkitik ri ixim, ri kinäq, janila k'a che' yekiqasaj ma jun yetik ta ri taq che' richin ke ri man xkek'is ta ri k'ichelaj richin chuqa' man xtik'is ri loq'aläj ya', ri chikopi'.

Wakami ri achi'a' xa ja ri kaxlan taq tiko'n kiya'on ruq'ij, re ruk'amon pe janila k'ayewal chi re ri loq'oläj qate' ruwach'ulew, ruma tajin nukamisaj ri ruchuqa'a' ri ulew.

Ri ojer kan ri qati't qamama' janila k'a xkiya' ruq'ij rutikik ri loq'oläj ixim ruma achi'el nub'ij ri Popol Wuj ja re xkusäx richin xetz'ac' xeb'it ri nab'ey taq qate' qatata'. Chuqa' ri ojer taq winaqi' janila xya' kiq'ij ri chikopi' kuma rije' chuqa' yech'on yetzijon nkina' ronojel ri nb'anatäj chi ruwäch ri ruwach'ulew, ri ojer kan töq yexule' ri al ri winaqi' nkib'ij chi nchapatäj ri loq'oläj jüb', töq yejote' ri al ja ri töq ntel ri saq'ij, wakami xa jun, xa ka'i' chik winaqi' ri yetz'eton re taq chikopi' re', chuqa' man nkiya ta rejqalem ronojel ri nkajo' nkib'ij chi qe re taq chikopi' re'. Pa ri Popol Wuj chuqa' ri chikopi' k'oj keqalem k'oj kismaj xkib'anala' achi'el ri Tukur ja re xok taqonel tzij. Ruma k'a ri k'oj chin qaya' ruq'ij ronojel ri k'oj chi ruwäch ri loq'oläj ruwach'ulew.





## RI CHAJINEL SIWAN

*Sik'ajan, José Alfredo López Sicaján.*

A Lu' rub'i' jun achin kanunel chikopi' pa jun tinamit, rija' yalan etaman chik ruwach kuma ri winaqi' ruma jeb'el nuchap taq chikopi', pa taq juyu', jun q'ij b'enaq chi rukanoxik chikopi' pa juyu', toq xutz'et jun ti ajxik' chikop pa jun nimalaj siwan re ti ajxik' chikop re', "Chajinel siwan" rub'i', janila nk'oxomaj rupam ri siwan toq nsik'in, yalan jeb'el tiwachin, raxroj, q'enq'oj, rub'onil ri taq ruxik'.

Ri achin janila nkikot ruma xtikir xuchap pe ri ti ajxik' chikop re'; xuk'waj el chi rochoch, toq xapon xub'an jun ti ruk'ojlib'al akuchi' tikirel nk'ase wi. Chuqa' janila nrajo' chi nsik'in ta pe, achi'el nub'an pa siwan, po man ke ri' ta xub'an, ruma re ti ajxik' chikop re' xa xe' pa siwan tikirel nsik'in we.

Jun q'ij xapon ri rumama' chi rochoch ri rumam, toq xutz'et ri ti ajxik' chikop tz'apal chi rupam ri che', janila xb'ison, xroyoj ri rumam, xub'ij chi re: ¿ Achike ruma atz'apen re jun ti ajxik' chikop re'? ri rumam xub'ij chi re, xa ruma janila utz ninwaxaj toq nsik'in pa siwan, ruma ri' xink'am pe' wawe' richin nsik'in ta achi'el nub'an pa siwan. Ri tat xub'ij chi re: la jun ti ajxik' chikop la', xa xe' nsik'in toq nb'e chikaj, chuqa' toq k'oj pa siwan, wawe man jun xtib'ixan ta, chuqa' we ke la' xtab'an chi re nb'ekam jun q'ij chi awach, chuqa' yalan xajan chi ruwach ri Ajaw ke la' ab'anon chi re, ruma rije' chuqa' k'oj kik'aslem achi'el roj, ruma ri' k'atzinel chi nab'etzolij kan pa siwan akuchi' xachap wi pe, ruma ri Ajaw kan chi ri' xuya' kan richin nuchajij, chuqa' nuk'oxomaj ri loq'olaj siwan juyu' taq'aj.

Ri achin xunimaj rutzij ri rumama', xb'e' pa juyu' xb'erusq'upej kan ri ti ajxik' chikop akuchi' xuchap wi pe, Toq xapon akuchi' xril wi pe, xrusq'opij el chi rupam ri siwan, toq xel el pa ruq'a', ri ti ajxik' chikop, xb'esik'in pe, chuqa' ri loq'olaj siwan janila xb'ekikot pe.

Ruk'in re jun b'anob'al re', ri achin xq'ax chi ruwach chi ri taq chikopi' k'oj kismaj ruya'on pe ri Ajaw, ruma ri', wakami man nutz'apij ta chik pa taq che', chuqa' man nukamisaj ta chik ri taq ajxik' chikop, ruma rije' kan janila nkikotz'ijaj rupam ri loq'olaj k'ichelaj.

## KAWUQ'E

*Violeta Díaz Zil, Claudia Floridalma Chiroy, Angelica María Chiroy*

Kawuq'e rub'i', jun tiruq'a' ri tinamit, Chi K'im Kawuq'e, k'oj chuchi' nimab'ey chi ill raqan b'ey pa kinik'ajal ri ka'i' tinamit kib'i' San Bartolomé Milpas Altas, chuqa' Xenakoj, chi runaqaj Tz'umpan.

Kawuq'e xalax pe, taq jun puq winaqi' aj Joyabaj, K'iche kan janila yetij kuma ri b'alam chuqa' koj, taq nikit'et manaq chik jun kach'alal chikiwach, ruma ri' xkinojij rukanoxik jun chik kulew chi yek'oje' wi, chi man yetij ta chik, kuma ri chikopi', ke ri' xkichap b'inem, ruk'in jun tyox rub'i' pa kaxlan tzij (Virgen de Catalán), k'oj chuqa' kaji' kit'at'an yeq'ajan pa ruwi' kotz'ijay, ka'i' nima'q, ka'i' kokoj, xe xkik'am pe oxí', ri jun xkiya' kan pa jun nim juyu', ke ri' nikajo' ye'apon pa jun peraj ulew rub'i' (Valle de las Carreteras) pa kaxlan tzij, wakami Armita, ke ri' nib'ix chi re kuma ri winaqi' yeb'e pa ri jun tinamit (Esquipulas) chi la' xe'uxlan wi ruk'in ri keqanibal chuqa' kuk'in ri kiwaxx, man xetikir ta chik xe'apon ruma kan janila e kosinaj chik, k'iy b'ey kib'anon pe ke ri' xeb'e'apon chunaqaj jun ti remaj ya' janila tew rupam ri k'ichelaj, chi re k'a xe'uxlan wi qa; Chi ya' nib'ix chire wakami, toq xokaq'a qa, chi ri k'a xkiq'axaj wi' ri aq'a' toq xseq'er xeyakataj pe richin nikichap jun b'ey chik ri b'inem, toq xkitz'et man k'oj ta chik ri kityox, toq ke ri' xkichap rukanoxik k'a, ke la' pa ruwi' jun ab'aj xkil wi, k'a naj qa, k'a paxulan qa, pa jun li'an juyu', janila k'a yekikot toq xkitzet qa xkajo' xkitzeqej chik pe xaman xetikir ta chik ruma kan janila k'iy, k'iy ralal ri tyox, xkib'ij k'a kere ruma k'a ri tyox man rajo' ta chik nib'e, ke ri' xkib'ij kojwuqe' k'a wawe'.

Ke ri k'a toq ri Ajaw xuya' k'a chi qe la juyu' la, ri qulew ke la' xtz'ukutaj pe ri tinamit re', xkib'an rochoch ri kityox, kochoch rije', wakami k'a xe chik ka'i' t'int'in niq'ajan pa ruwi' kotz'ijay ruma ri jun xkiqaj ri aj Chi k'im, wakami k'a man xkitzolij ta chik; ruma k'a ri rub'ina'an ri tinamit Santa María Kawuq'e'.





# JANILA JEB'ËL RUWACH'ULEW.

*Sik'ajan, José Alfredo López S.*

Janila jeb'ël ri k'aslem chi ruwäch ri ruwach'ulew,  
ri q'ij, ri ik', ri ch'umil,  
ri taq'ajxik' chikopi' ri yexik'an chi kaj.  
Ri qate' ruwach'ulew, räx, räx rub'onil,  
nink'utuj ¿achike k'a ri Ajaw?  
Jun q'ij xiroyoj ri loq'oläj qate' ruwach'ulew,  
rija' nimaläj taq ruwäch, man achi'el ta xinojij rin.  
Xintz'ët chi rija', janila yirajo',  
ruma yiruchajij chi ruwäch ri ruwach'ulew.

Wakami xqa ri q'ij, janila kikotem,  
ri kaq'iq' nijumin chi rupam ri k'ichelaj,  
yalan tew nub'an, po janila yinkiköt,  
ruma nab'ey mul xintz'ët ri rusaqil ri qate'  
ruwach'ulew.

Ri kajowab'äl ri nute' natata', chi rupam ri nuk'aslem,  
ninwak'axaj ri kich'ab'äl ri winaqi' pa b'ey,  
xqaq'ij nan, xqaq'ij tat, ¿achike ruma ke ri' n'kib'ij?,  
ruma ri loq'oläj q'ij eqal, eqal, nib'e' el.

Eqal eqal b'enäq qa la q'ij,  
yinrutzu' kan ruk'in ronojel rukikotem,  
xetzolin k'a ri nute', nutata',  
xirejqaj pe ri nutata', ruk'in jun nimaläj kikotem.

Janila ninrayij jun chik q'ij nintz'ët ri saq'il,  
wakami' q'equ'm, q'equ'm rub'anon ri kaj, xok qa ri  
aq'a', näj näj, b'enäq ri nurayib'äl, richin jun utziläj  
k'aslemal, ri chwa'q kab'ij apon....

Yalan q'equ'm rub'anon ri kaj,  
po nintz'ët chi kaj jun chik nimaläj saq'il,  
kisutin rij kuma ch'aqa' chik taq q'aq',  
yech'ich'an, yech'ich'an, yetze'en pe wuk'in.

Achike k'a kib'i' la', man jani wetaman ta,  
achi'el xa ja ri wati't ik', chuqa' ri taq ch'umila',  
xb'e' ri aq'a', xb'e' ri wati't ik', xeb'e' ri ch'umila',  
xa xe' xkiya kan pa nuk'aslem chi ri je',  
yinkichajij chi paq'ij chi chaq'a' jantape'.

Une' une' une' kixk'astäj, nan, kixk'astäj tat,  
ri qatata' q'ij xojrusaqirisaj pe chik,  
ri qate' ruwach'ulew yojroyob'ej ruk'in ronojel  
rukikotemal richin nqab'eb'ana' ri qatiko'n.

Matyox chi awe loq'oläj Ajaw,  
yinachajij chi paq'ij chi chaq'a',  
Ruk'u'x Kaj, Ruk'u'x Ulew.  
¡Matyox, matyox! Chi awe.

# RI IXIM

*Anastasio Pata Mejia.*

Xtiko'ol ok ab'anikil  
at ki' töq at äj,  
at simil töq at chaqij,  
at rayil töq at chaqij chik.

Xataläx chwäch ri ruwach'ulew Iximulew,  
kan at jeb'ël ok chi re nuk'aslem  
chuqa' chi re kik'aslem ri Maya' taq Winäq.

Ixim, loq'oläj nuway,  
ruk'amon ri ab'i' Loq'oläj qate'  
pa kich'ab'äl ri wati't, numama',  
ri e k'owinäq kan iwir kab'ijir.

Loq'oläj Ixim jantape' yatinrayij  
jantape' yatinwajo', jantape nqaya' a q'ij,  
ruma kan at nuk'aslem ri iwir kab'ijir,  
chuqa' ri chuwaq kab'ij xtib'e' q'ij xtib'e' q'equ'm.

Loq'oläj Ixim kan nib'ixaj ri ab'i',  
kan nib'ixaj ri ak'ojlem,  
ruma kan at saqipwaq yatintz'ët  
chupam ri nimaläj Iximulew.

Loq'oläj Ixim kan man jun nilon ta ri ab'onil,  
kan man jun nilon ta ri aki'il,  
kan jeb'ël ri aki'il, kan at simil, simil,  
ruma ri' jantape' yatinwajo'.





# KINUK'IK RI K'AK'A' TAQ TZIJ

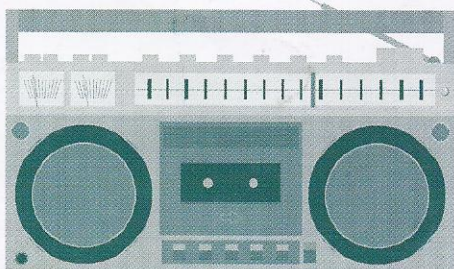
K'ak'a' taq tzij richin Retamab'alil Winaqil: K'ak'a' taq tzij richin Retamab'alil Kajulew:

KAQCHIKEL	KAXLAN	KAQCHIKEL	KAXLAN
Achamaq'el	Federal	Achko	Estambre
Achib'äl Ulew	Topografía	Aj'eyaj	Dentista
Achsamaj	Obligación	Ajruq'ulew	Anfibios
Aj palow	Marinos	Ajwachaj	Oculista
Aj'ik' ch'umil	Astrónomo	Alanel	Órgaco reproductor
Ajcha'jib'äl	Destacamento	Alch'ich'	Estaño
Aj'ik' k'as	Fiador	Atiyalil	Aluminio
Ajmir	Mecánico	B'aqilal	Esqueleto humano
Meq'tewal	Clima	B'atz'el Q'ayis	plantas textiles
Mulul, ch'ob'	Partido	B'iq'ib'a'	Deglución

K'ak'a' taq tzij richin Retamab'alil Ajlanem:

KAQCHIKEL	KAXLAN	KAQCHIKEL	KAXLAN
Achlajil molaj	Conjuntos y relaciones	Achlajini'k	Relacionar
Ajilab'äl	Número racional	Ajilab'alil	Numeral
Ajilab'alinem	Enumerativa	Ajilal	Cifra, dígito
Ajsi'k ajilab'äl	Numerador	Alil etab'äl	Medidas de peso
B'eya'il	Fórmula	B'olajuch	Línea ondulada.

## Ruk'u'x Maya' b'anob'äl



Qach'alal tiwak'axaj ri rusamaj ri Kaqchikel Cholchi'

### Ruk'u'x Maya' B'anob'äl

Ronojel saq'ij chuqa' toq'ij pa talutzij **Maya' Winaq** (96.1 FM) 5:00 k'a richin 5:30 richin nimaq'a' chuqa' ri toq'ij 6:15 k'a richin 6:45 nimaq'a', ri tokaq'a' 8:30 k'a richin 9:00 richin aq'a'. Chuqa' pa talutzij **Estereo Mayense** (92.7 FM) ri toq'ij 5:30 k'a richin 6:00 richin nimaq'a'

K'ulb'il Yol Twitz Paxil  
Academia de Lenguas Mayas de Guatemala  
13 Calle 11-52 Zona 1, Tel. 2323404 Fax 2329342  
Guatemala, Guatemala C. A.

Kaqchikel Cholchi'  
Comunidad Lingüística Kaqchikel  
3 Calle 3-28 Zona 4. Interior Turicentro La Joya.  
Tel. 8396577  
Chimaltenango, Guatemala C. A.

